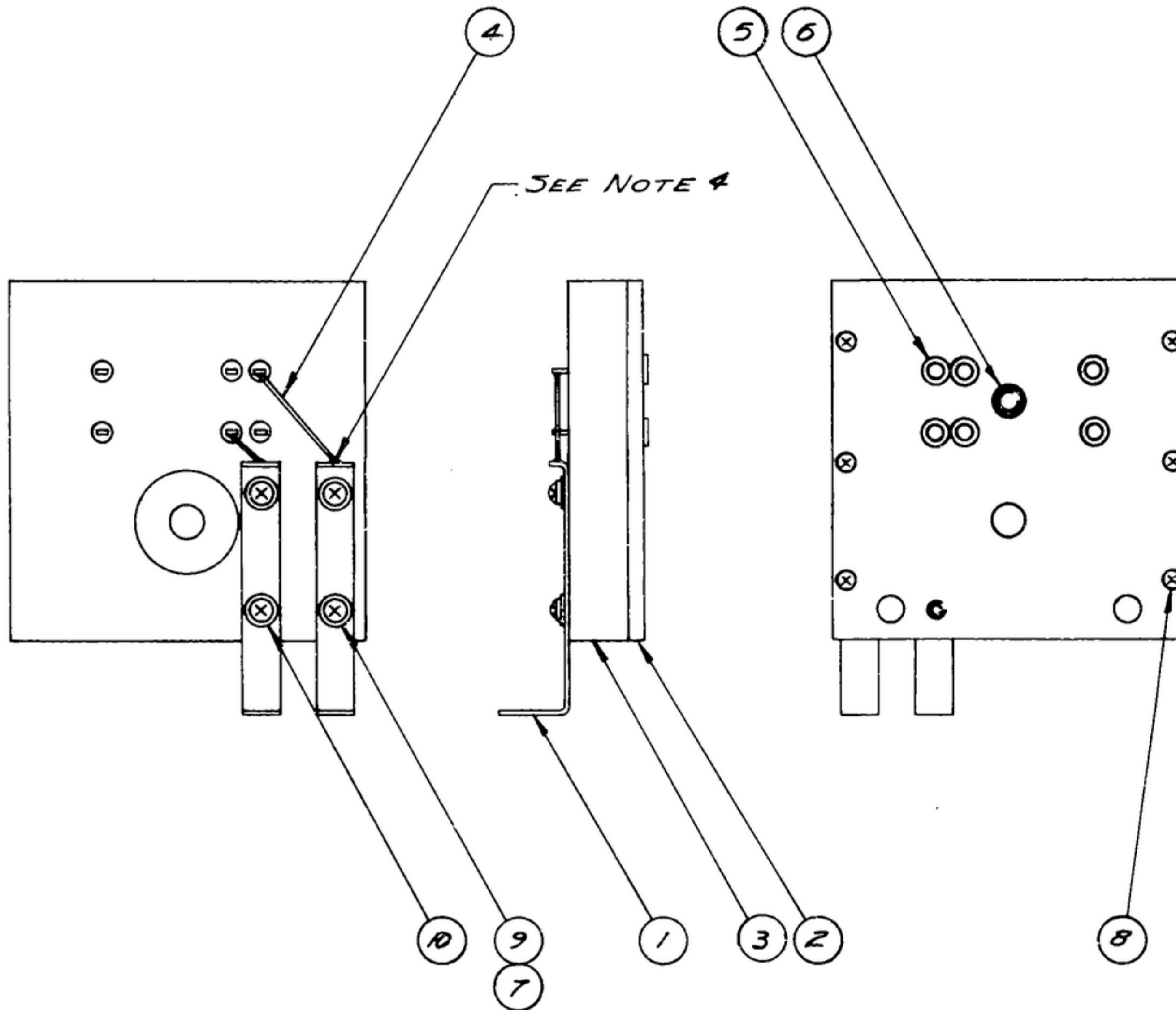


UNLESS OTHERWISE SPECIFIED, DIMENSIONS AND OTHER DATA ARE TO BE TAKEN FROM THE DRAWING. THE DRAWING IS THE AUTHORITATIVE SOURCE FOR THE FABRICATION AND ASSEMBLY OF THIS DRAWING. THE DRAWING IS THE PROPERTY OF THE GOVERNMENT AND IS NOT TO BE REPRODUCED OR TRANSMITTED IN ANY FORM OR BY ANY MEANS, ELECTRONIC OR MECHANICAL, INCLUDING PHOTOCOPYING, RECORDING, OR BY ANY INFORMATION STORAGE AND RETRIEVAL SYSTEM, WITHOUT PERMISSION IN WRITING FROM THE GOVERNMENT. THIS DRAWING IS NOT TO BE USED FOR THE FABRICATION OF ANY OTHER PARTS OR ASSEMBLIES WITHOUT THE WRITTEN PERMISSION OF THE GOVERNMENT. THE GOVERNMENT ASSUMES NO LIABILITY FOR ANY DAMAGE OR LOSS OF PROPERTY, INCLUDING PROFITS, THAT MAY BE SUFFERED BY ANY PARTY AS A RESULT OF THE USE OF THIS DRAWING.

THIS DRAWING HAS BEEN FORWARDED BY THE GOVERNMENT AND MAY BE REPRODUCED AND USED IN CONNECTION WITH ANY GOVERNMENT PURCHASE OR CONTRACT WITHOUT PERMISSION OF THE GOVERNMENT.

*FOR INFORMATION ONLY. CONTRACTOR MAY AT HIS OPTION DEVIATE FROM THESE PROCESS DETAILS.

DRAWING 15508 A REVISIONS 24 Aug 56			
SYM	DESCRIPTION	DATE	APPROVAL



NOTES

1. SUPPLIED BY SEAELECTRO CORP. NEW ROCHELLE, NEW YORK, OR EQUAL.
2. SUPPLIED BY INLAND AUTOMATIC INC, OMAHA, NEB. OR EQUAL. (CAPTIVE)
3. SUPPLIED BY SNAKEPROOF INC, CHICAGO, ILL, OR EQUAL.
4. SOLDER SHALL BE SN-50 PER QQ-5-571.
5. ALL SCREW THREADS SHALL BE PER HAND BOOK H2B
6. SHALL BE TYPE 5 #20 SOFT ANNEALED TIN COATED.
7. ADAPTER USED FOR TESTING T-204 THRU T-206.

DET. NO.	QTY	PART NO.	DESCRIPTION	MATL.	FINISHED SIZE	CH'T	NOTE
10	1	M535216-17					
9	3	M535216-11					
8	6	M535200-14	SCREW				
7	4		-4 WASHER #1904-00				3
6	1		-3 NUT #4-40NC-2B X .230TIN X 1/4 HEX	STEEL			2
5	6		-2 SOCKET #SKT-1	T&FLON			1
4	AS REQ	JMC-33303-1	WIRE MIL-W-3861	COPPER			6
3	1	SM-B-31247	PLATE				
2	1	SM-B-31251	PLATE				
1	2	SM-B-34399	CONNECTOR				

LIST OF MATERIAL

		UNLESS OTHERWISE SPECIFIED		COLLINS RADIO CO.		DEPARTMENT OF THE ARMY SIGNAL CORPS ENGINEERING LABORATORIES FORT MONMOUTH NEW JERSEY SM-C-33303
		DIMENSIONS ARE IN INCHES		CEDAR RAPIDS, IA.		
		TOLERANCES ON		08719-PH-55-93		
		FRACTIONS DECIMALS ANGLES		SIGNAL CORPS		
				REVIEWED XXX		
				APPROVED		
				DATE 24 AUG 56		
				SCALE 1/1		
NEXT ASSY		USED ON				
APPLICATION						